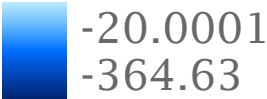


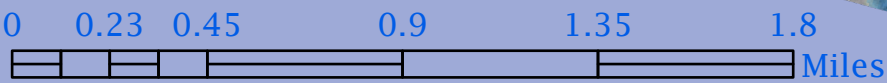
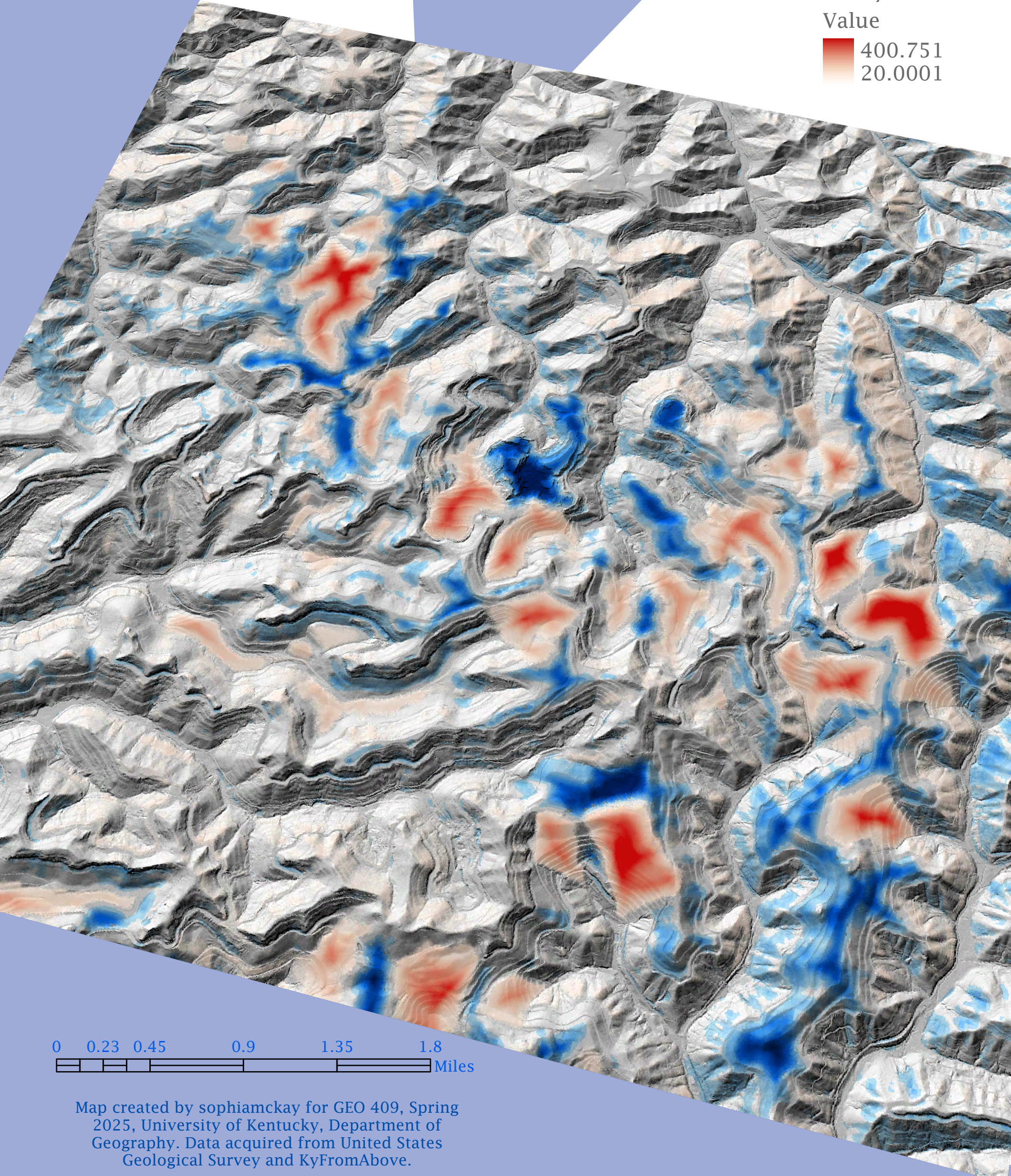
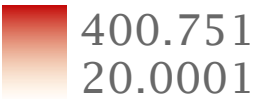
Terrain Modification in the Cumberland Plateau

Mountain top removal site in Knott County, Kentucky. This map demonstrates drastic alterations in the terrain between the 1990's and 2010's.

Mountain Top Removal Value



Valley Fill Value



Map created by sophiamckay for GEO 409, Spring 2025, University of Kentucky, Department of Geography. Data acquired from United States Geological Survey and KyFromAbove.